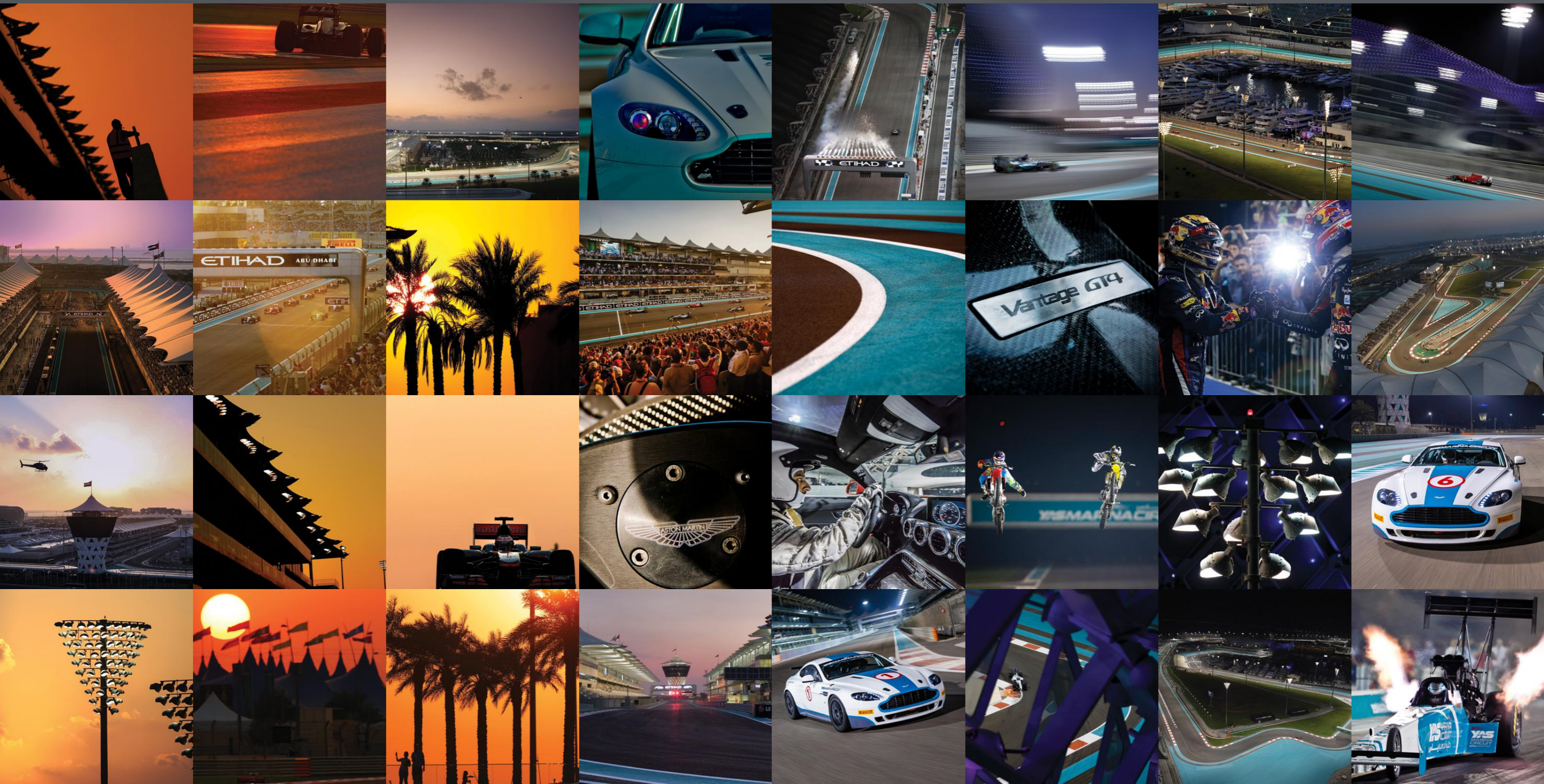


حلبة مرسى ياس
YAS MARINA CIRCUIT



CIRCUIT MAP

FIA FIA GRADE 1
CIRCUIT

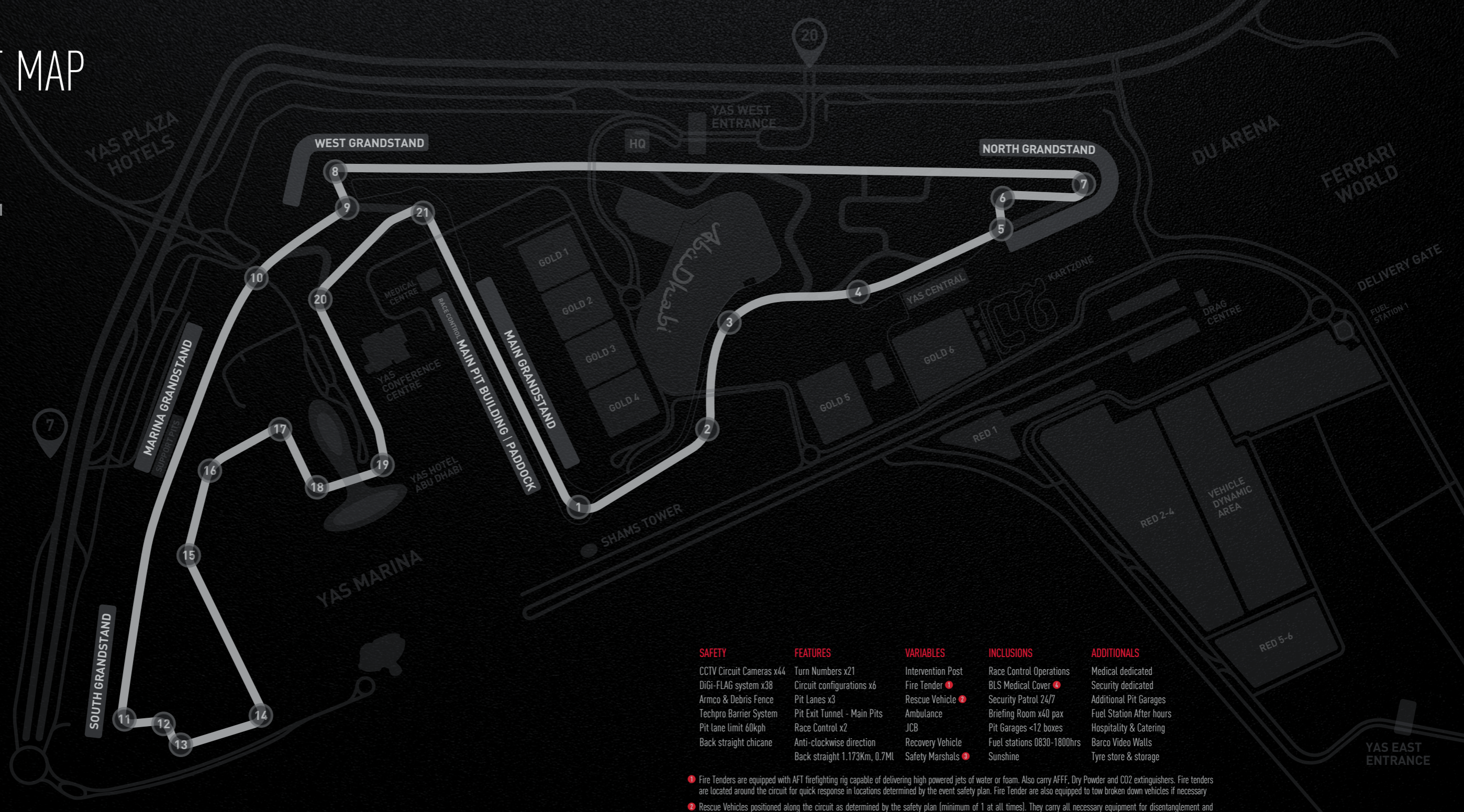
CIRCUIT 11 Meters
ELEVATION 36 Feet
CHANGE

ANTI-CLOCKWISE
DIRECTION

NOISE LEVEL
NO RESTRICTION
09:00-24:00HRS

FLOOD LIGHTS / EFFICIENCY 14 | 7 | 365
14 HOURS PER DAY
7 DAYS A WEEK
365 DAYS A YEAR

WET WEATHER
SIMULATED TESTING
AVAILABLE ON REQUEST



SAFETY

CCTV Circuit Cameras x44
DiGi-FLAG system x38
Armco & Debris Fence
Techpro Barrier System
Pit lane limit 60kph
Back straight chicane

FEATURES

Turn Numbers x21
Circuit configurations x6
Pit Lanes x3
Pit Exit Tunnel - Main Pits
Race Control x2
Anti-clockwise direction
Back straight 1.173Km, 0.7MI

VARIABLES

Intervention Post
Fire Tender ①
Rescue Vehicle ②
Ambulance
JCB
Recovery Vehicle
Safety Marshals ③

INCLUSIONS

Race Control Operations
BLS Medical Cover ④
Security Patrol 24/7
Briefing Room x40 pax
Pit Garages <12 boxes
Fuel stations 0830-1800hrs
Sunshine

ADDITIONALS

Medical dedicated
Security dedicated
Additional Pit Garages
Fuel Station After hours
Hospitality & Catering
Barco Video Walls
Tyre store & storage

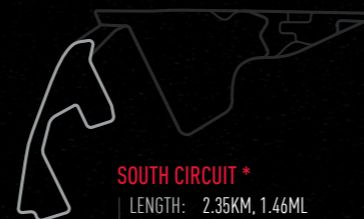
- ① Fire Tenders are equipped with AFT firefighting rig capable of delivering high powered jets of water or foam. Also carry AFFF, Dry Powder and CO2 extinguishers. Fire tenders are located around the circuit for quick response in locations determined by the event safety plan. Fire Tender are also equipped to tow broken down vehicles if necessary
- ② Rescue Vehicles positioned along the circuit as determined by the safety plan (minimum of 1 at all times). They carry all necessary equipment for disentanglement and extrication including Holmatro Hydraulic cutting equipment. They also carry foam, powder and CO2 extinguishers to supplement the circuit Fire Tender response. Rescue Vehicles can be deployed to tow-stricken vehicles.
- ③ ADMM circuit marshals are trained and licensed by the ATCUAE to FIA Grade B in rescue and extrication procedures. Their skills and knowledge are regularly refreshed and tested both internally and externally (FIA, Formula Medicine). YMC reserves the right to fix the number of marshals needed according to the track activity on track.
- ④ Medical Cover includes 1 x BLS Ambulance. Note that unless booked as dedicated, the BLS Medical will be stationed at YMC Medical Centre and will respond to any incidents venue wide as required. Should the Ambulance be deployed to an incident, all track activity site wide will cease until cover is reinstated. Only events with dedicated medical can continue uninterrupted.



FULL GRAND PRIX CIRCUIT
LENGTH: 5.55KM, 3.45MI
WIDTH: 12M
CORNERS: 12 LEFT & 9 RIGHT



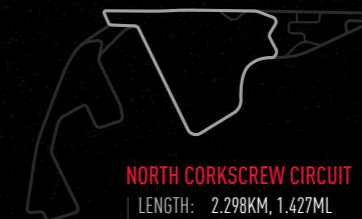
NORTH CIRCUIT *
LENGTH: 3.15KM, 1.96MI
WIDTH: 12M
CORNERS: 7 LEFT & 3 RIGHT



SOUTH CIRCUIT *
LENGTH: 2.35KM, 1.46MI
WIDTH: 12M
CORNERS: 8 LEFT & 5 RIGHT



FULL CORKSCREW CIRCUIT
LENGTH: 4.73KM, 2.94MI
WIDTH: 12M
CORNERS: 12 LEFT & 8 RIGHT



NORTH CORKSCREW CIRCUIT
LENGTH: 2.298KM, 1.427MI
WIDTH: 12M
CORNERS: 7 LEFT & 3 RIGHT



NORTH HANDLING CIRCUIT
LENGTH: 0.97KM, 0.60MI
WIDTH: 9.55M
CORNERS: 7 LEFT & 3 RIGHT

* NORTH & SOUTH CIRCUIT CAN BE RUN INDEPENDENTLY MAKING IT POSSIBLE TO RUN THE TWO CIRCUITS SIMULTANEOUSLY.

TEAM SERVICES

MAIN PIT GARAGES (F1® PIT BOXES)

Main Pit Lane: Length: 360M x Width 15M Speed Limit 60kph	Access: programmable RFID card access
40 x Air-conditioned Pit Garages (Blocks of 6 Pit Garages)	Bathrooms: 1 x Toilet & washbasin per Pit
Main Pits 1-4 Scrutineering 5-10 11-16 17-22 23-28 29-34 35-40	Internet: WIFI and LAN capable up to 10Mbps
Each pit can be securely partitioned creating an individual working space.	TV screens: 1 x 32" TV per pit with VLC playback capability
Dimensions: Length 20.5M x Width 6.7M x Height 2.5M (approx. 140sqm)	Compressed air lines: Connection 1/2 inch BSP regulated to 12 Bar
Door opening: Width 3.3M x Height 2.5M	Electrical; a combination of 3-phase 60amp & single-phase 30amp



SUPPORT PIT GARAGES

Support Pit Lane: Length: 280M x Width 14M Speed Limit 60kph	Access: programmable RFID card access
30 x Pit Garages (Non- air-conditioned) Blocks of 6 Pit Garages	Bathrooms: 1 x Toilet & washbasin per Pit
Support Pits 1-3 Scrutineering 4-9 10-15 16-21 22-27 28-30.	Internet: WIFI and LAN capable up to 10Mbps
Each pit can be securely partitioned creating an individual working space.	TV screens: 1 x 32" TV per pit with VLC playback capability
Dimensions: Length 15M x Width 6M x Height 2.5M (approx. 90sqm)	NO Compressed air lines, bottled air available for purchase
Door opening: Width 3.5M x Height 2.5M	Electrical; a combination of 3-phase 60amp & single-phase 30amp



TYRE & FUEL STORE

Dimensions: Width 23M x Length 33M x Height 4M approx. 750 SQM	Internet: WIFI and LAN capable up to 10Mbps
Door opening: Width 3M x Height 2.5M	Compressed airlines: Connection 1/2 inch BSP regulated to 12 Bar
Access: programmable RFID card access	Electrical; a combination of 3-phase 60amp & single-phase 30amp
Bathrooms: 1 x Toilet & washbasin per Pit	Dedicated fuel store available for teams bringing in their own fuel
Fuel 98 Octane available from YMC Fuel Station operational 08:30-18:00hrs 7 days a week. Ask us about after-hours operations	YMC can provide a range of Motorsport consumables & services available if pre-ordered through our Paddock Order Form available on request.



HOSPITALITY

TEAM VILLAS

These three-storey Team Villas, with luxurious Italian design finishes are as perfect for client meetings or entertaining as they are for the F1Teams base of operations during the Grand Prix weekend. Each villa has several offices and dining options complete with commercial kitchen and showers. Total 18 Team Villas of which the two central villas are of larger size and 16 standard size. Ground floor small = 57sqm, Ground floor Large = 125sqm.

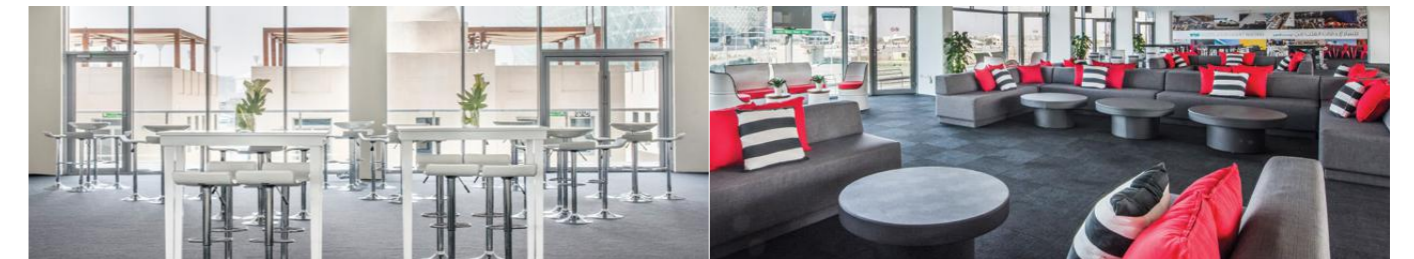


Paddock Club Suites

Located directly above Main Pit Garages the Paddock Suites overlook the circuits main starting grid and offer truly unique views. There are 16 interconnected suites to choose from across three levels, each able to cater up to 774 guests in a variety of configurations. One suite = 550 sqm.

MARINA VIEW SUITES

Located directly above Support Pit Garages the Marina View Suites overlook the South circuit starting grid as well as the best views of the Yas Marina and iconic Yas Hotel and are ideal hospitality option for any track activity on south circuit or when using the support pit garages. There are 3 large air-conditioned suites, one suite = 806 sqm.



YAS CONFERENCE CENTRE

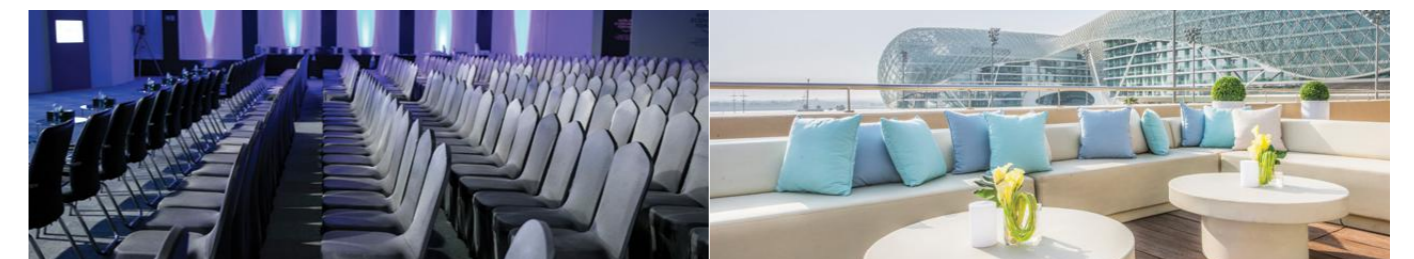
Yas Conference Centre (YCC) consists of 11 flexible venue spaces, each with natural sunlight and many that are fully customizable to your brand. Take advantage of the Abu Dhabi sunshine and choose one of our outdoor roof terraces for event with a view over the surrounding ocean.

GP HALLS

GP Halls at YCC. The place to go for large scale in-door events, with 1,177 sqm of floor space and three meeting rooms it is able to host up to 1,200 guests. The dynamic venue can stage three events at once, and features built-in audio and Barco screens. This standalone venue can be booked exclusively, offering privacy for high profile or confidential content.

MEDIA CENTRE

Media Centre YCC doubles as the official F1 Media Centre for the Grand Prix weekend and is available for hire in this configuration or depending on your requirements a Media Centre can be configured in one of our many other locations specific to your requirement and locations.



ALWAYS ON